



PRODUCT INFORMATION

DualSun product reference	230120356
product label	DN15 - Spring inlet/outlet connector kit - M3/4 NPT
Description	<ul style="list-style-type: none">- 2 x 15 mm fixed barbed connectors - M3/4 NPT- 2 x fixed plugged 15mm barbed fittings- 4 x Stainless steel clamps- 2 x JFHT4 high temperature flat fiber gaskets- 24 x DN15 hydraulic connection fixing hook on panel
Use	One inlet-outlet kit per line of panels

TECHNICAL DATA

Material name	<ul style="list-style-type: none">- Fixed splined fittings 15 mm - M3/4 NPT<ul style="list-style-type: none">- Brass CW614N/CW617N
	<ul style="list-style-type: none">- steel clamps<ul style="list-style-type: none">- W4 DIN3017
	<ul style="list-style-type: none">- High temperature flat fiber seals JFHT4 Aramid<ul style="list-style-type: none">- fibers + NBR

DIMENSIONS

Stainless steel clamps

Diameter (mm)	12-22
Width (mm)	9

DIMENSIONS

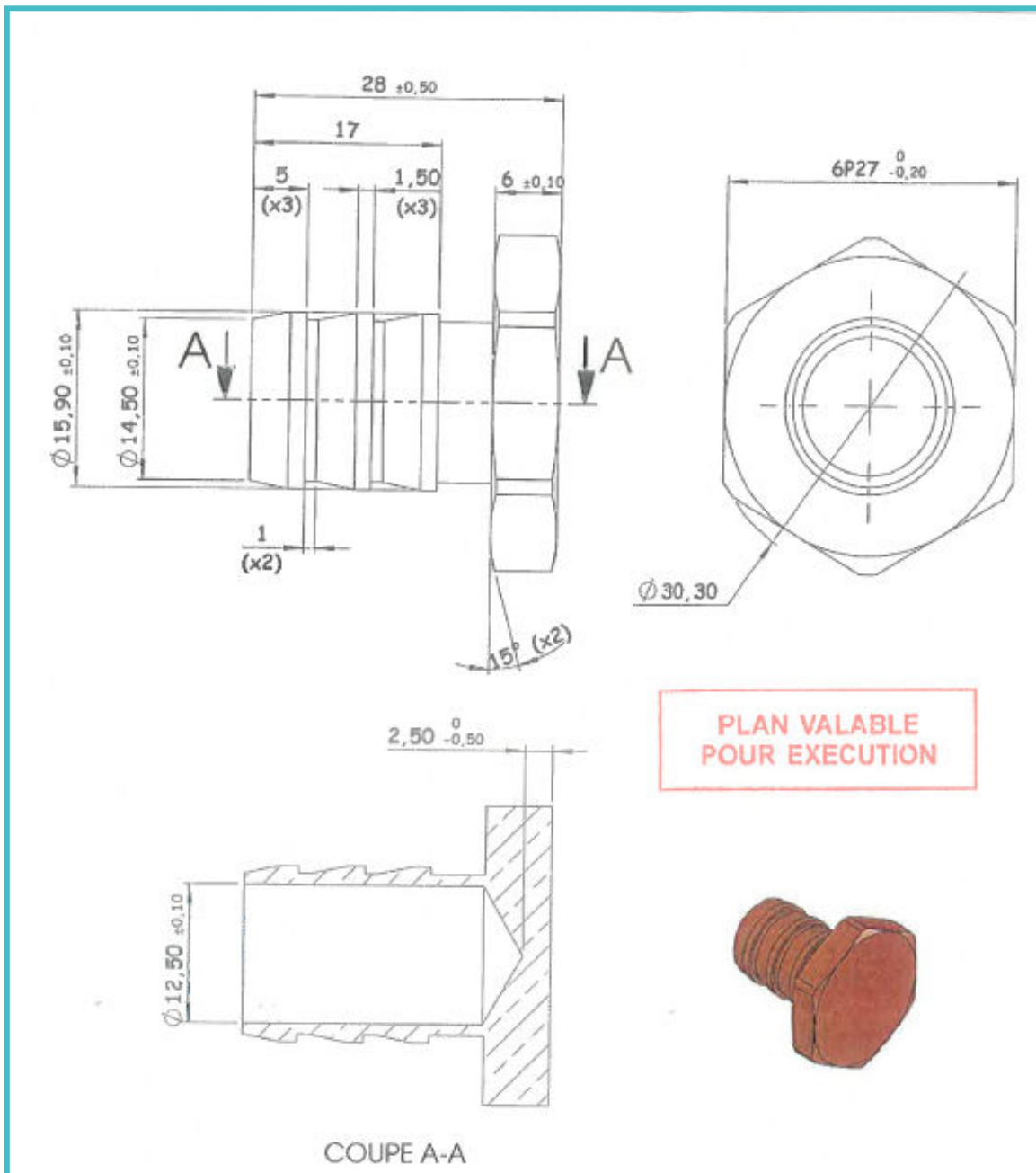
JFHT4 high temperature flat fiber gaskets

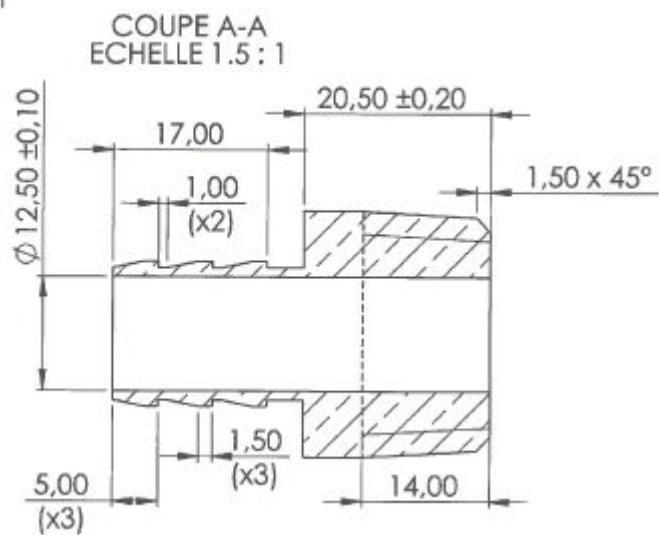
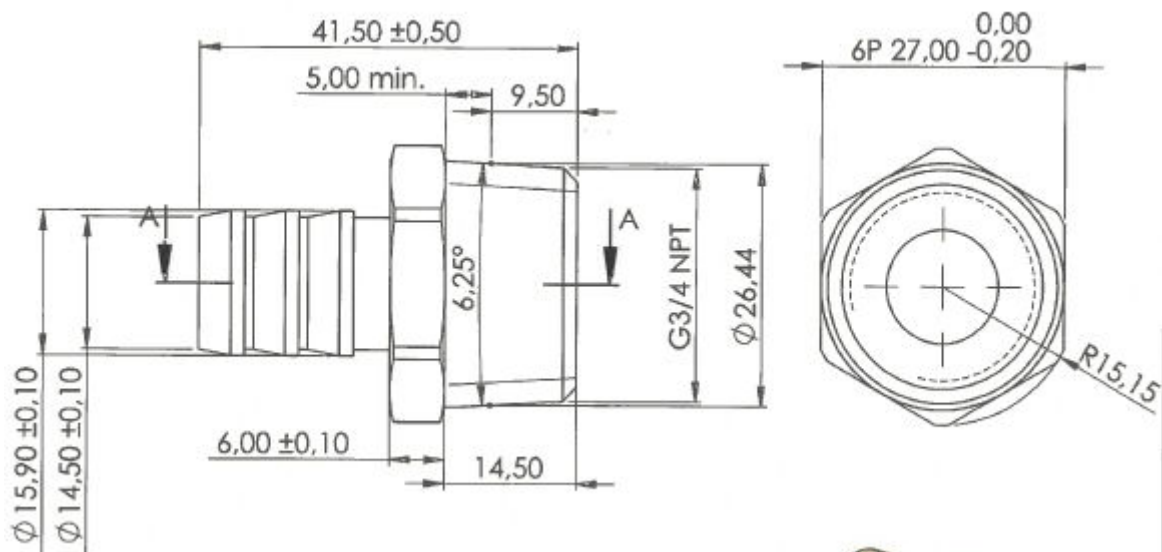
Diameter 18-12

Thickness (mm) 2

LAYOUT

Fixed fluted fittings 15 mm - M3/4 NPT





ECHELLE 1:1



Hydraulic connection hook DN15 on

